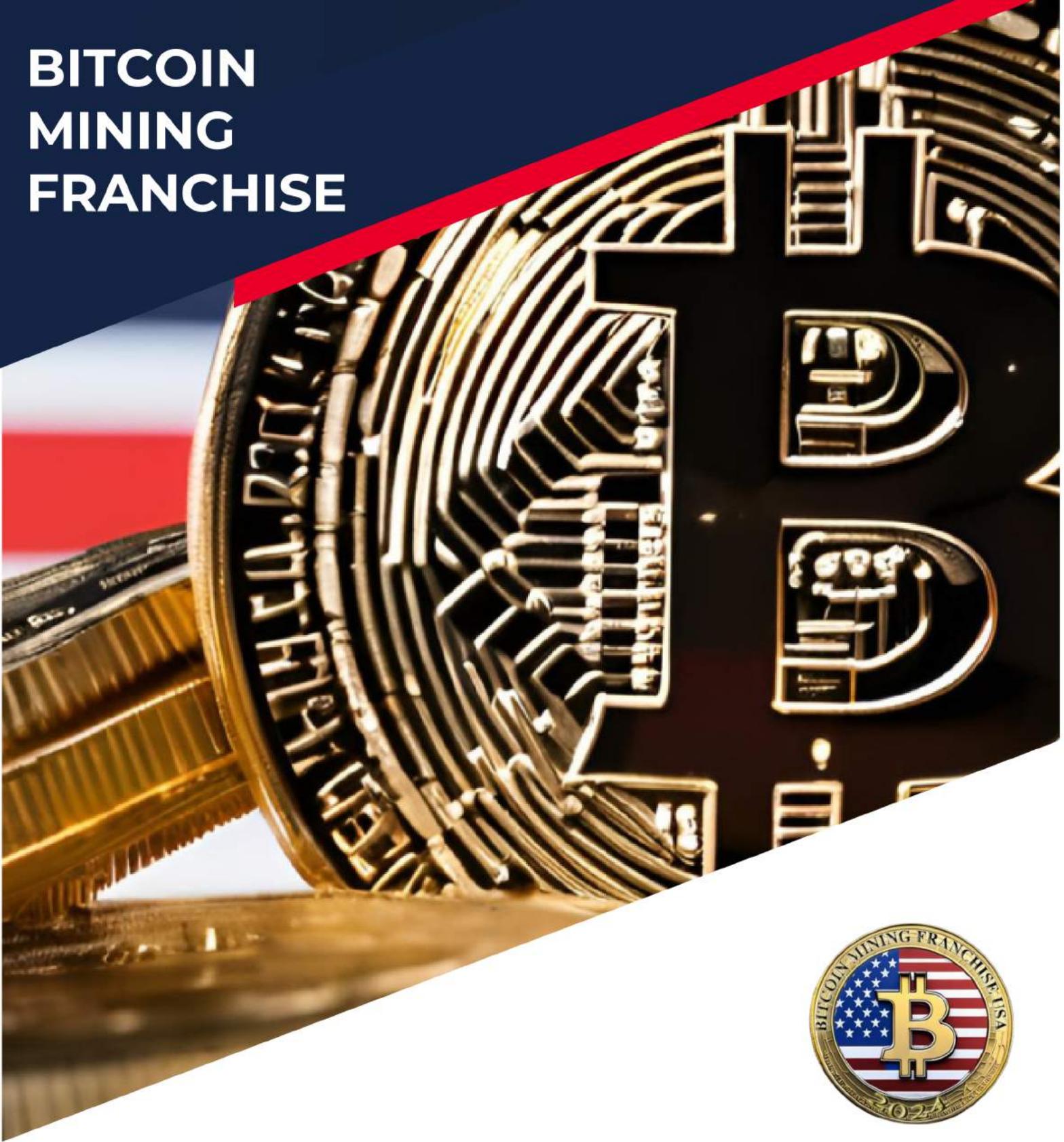


BITCOIN MINING FRANCHISE



Your Gateway to Bitcoin Mining



Posillico Real Estate & Construction

12 Red Creek
Circle Hampton
Bays, NY 11946,

Dear Lawrence Newman

I am writing to express my intent and interest in establishing a cutting-edge production facility dedicated to the development and maintenance of critical data resources for the United States of America. This is a joint venture between SourceMo USA and Posillico Real Estate & Construction.

As we stand on the precipice of the Information Age, data has become the lifeblood of our economy, governance, and society. The need for robust and secure data resources has never been greater. My aspiration is to contribute significantly to this field by creating a production facility that will serve as a strategic flagship model.

Key aspects of this initiative would include:

- | **Data Security:** Our production facility will adhere to the highest standards of data security and privacy. We will implement cutting-edge encryption, multi-factor authentication, and continuous monitoring to safeguard sensitive data.
- | **Data Sovereignty:** Emphasizing the importance of data sovereignty, our facility will ensure that American data remains on American soil, protecting it from foreign influence and cyber threats.
- | **Technological Advancements:** We will continually invest in research and development to stay at the forefront of data management, analytics, and security technologies, ensuring that our resources are always state-of-the-art.
- | **Collaborative Partnerships:** We intend to collaborate with government agencies, private enterprises, and academic institutions to foster innovation, share knowledge, and collectively address data challenges.
- | **Workforce Development:** Our facility will provide opportunities for the growth and development of a skilled workforce in the fields of data science, cybersecurity, and related domains.

I am eager to discuss this vision further and explore the potential for partnership and collaboration to bring this initiative to fruition. I believe that by working together, we can create a production facility that not only fortifies America's data infrastructure but also sets a global benchmark for data security and innovation.

I look forward to the opportunity to meet and discuss the possibilities in more detail. Please feel free to reach out to me at (888) 441-6486 to schedule a meeting at your earliest convenience. Thank you for considering this letter of intent, and I eagerly await the opportunity to collaborate on this important endeavor.

Sincerely,

Dominic Posillico
Director | Posillico Construction

Blackstone-backed Legence files for IPO amid data-center boom because of America's continuous growing need.



Legence, a Blackstone-backed HVAC installation and engineering company, will seek to raise as much as \$754 million in its initial public offering.

The company, which is riding the booming demand for data centers and life sciences facilities, plans to sell 26 million shares at a price of \$25 to \$29 apiece, according to a filing Tuesday. The IPO could value Legence at nearly \$3 billion.



Data centers in the USA have seen rapid growth over the past decade, fueled by the rise of cloud computing, AI, big data, and increased digital connectivity. Major tech hubs such as Northern Virginia, Dallas, Phoenix, and Silicon Valley are leading this expansion, with hyperscale facilities becoming increasingly common.

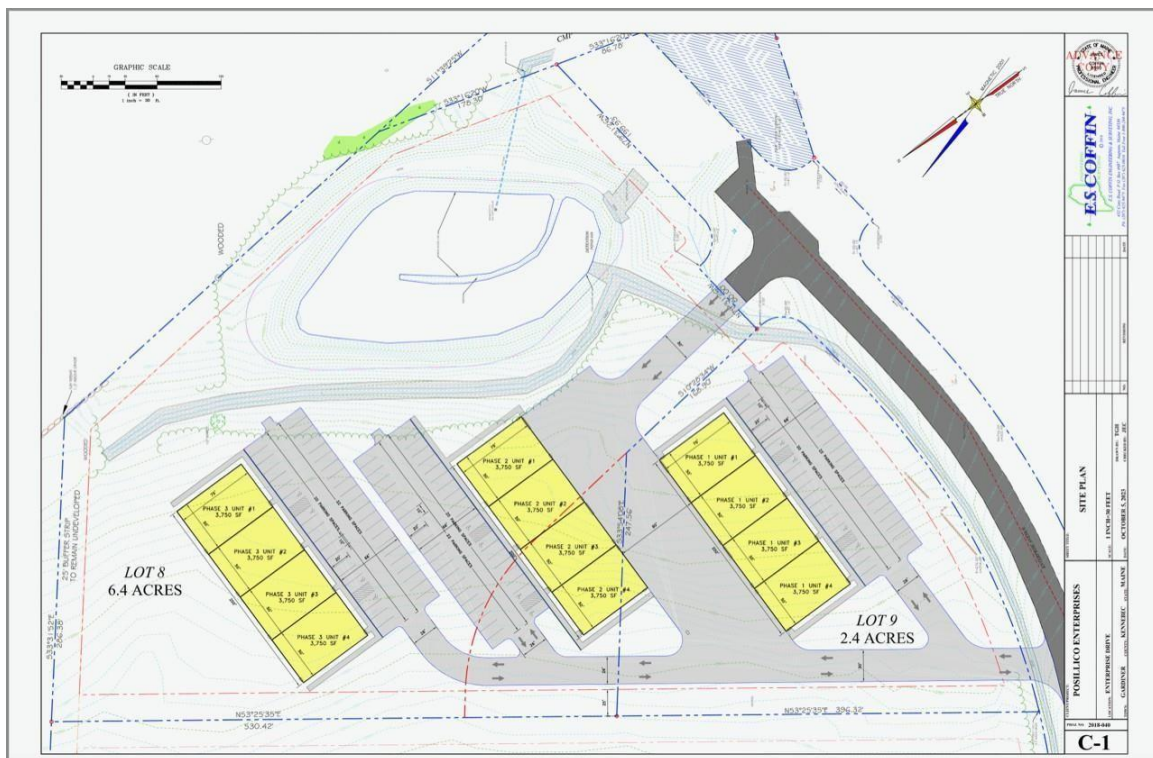
Demand is also being driven by enterprises migrating to cloud platforms and the surge in streaming, e-commerce, and remote work. At the same time, sustainability initiatives are shaping the industry, with providers investing heavily in renewable energy and energy-efficient infrastructure to meet growing power demands responsibly.

Mission Conclusion:

In closing, at **Bitcoin Mining Franchise**, our mission to create a sustainable future through self-generating facilities that produce renewable energy, clean water systems, and recycling is a vision for a world where environmental stewardship meets technological innovation. We remain steadfast in our commitment to:

- **Environmental Harmony:** By harnessing renewable energy sources, we reduce our reliance on fossil fuels and mitigate climate change. Our clean water systems ensure the availability of safe, potable water while safeguarding ecosystems, and our recycling efforts protect valuable resources from depletion.
- **Technological Advancement:** We continuously strive to push the boundaries of what's possible in renewable energy generation, water purification, and recycling. Our dedication to innovation drives the development of sustainable solutions that address pressing global challenges.
- **Global Impact:** We believe in the transformative power of our integrated approach. Together with partners, communities, and individuals worldwide, we aim to leave a lasting legacy of a healthier planet, accessible clean water, and a circular economy.

As we conclude, our mission serves as a guiding light, inspiring us to push forward relentlessly in our pursuit of a more sustainable and harmonious world. Together, we can redefine the future, where self-generating facilities are not just sources of energy, but catalysts for positive change, ensuring that our planet thrives for generations to come.



Dominic Posilico

As a builder and developer, Mr. Posilico has a broad knowledge of real estate construction. He can help guide a buyer or seller to deal with construction issues. Mr. Posilico believes in integrity and honesty in representing his clients and customers. He understands how to get the most money for his sellers due to his extensive experience as a property owner and investor. Among his many qualifications in the real estate field, Mr. Posilico is also a New York State Certified instructor for the residential appraisal courses, under the Department of State Division of Licensing.

The Facility

The Renewable Energy Bitcoin Mining Data Resource Center is a state-of-the-art facility dedicated to the sustainable and efficient mining of Bitcoin and other cryptocurrencies. Located in an environmentally conscious region, this center embodies a commitment to reducing the carbon footprint associated with cryptocurrency mining. Here's a detailed description of this innovative facility:

1. Sustainable Location:

The center is strategically located in a region known for its abundant sources of renewable energy, such as solar, wind, and hydroelectric power. This ensures that the majority of the facility's energy needs are met with clean and sustainable sources.

2. Energy Efficiency:

The data resource center is equipped with the latest energy-efficient technologies and hardware. This includes high-efficiency mining rigs and cooling systems, as well as advanced power management to minimize energy wastage.

3. Renewable Energy Sources:

The center harnesses renewable energy from solar panels, wind turbines, and hydropower, all seamlessly integrated into the facility's infrastructure. Excess energy is stored in cutting-edge battery systems for use during periods of low renewable energy production.

4. Sustainable Building Design:

The building itself is designed with sustainability in mind. It features large windows to maximize natural light, a green roof with vegetation to regulate temperature, and advanced insulation to reduce heating and cooling needs. Rainwater harvesting systems are in place to minimize water wastage.

5. Security and Redundancy:

The facility is equipped with top-tier security measures to protect the valuable mining equipment. It also has multiple redundancies, including backup power sources, internet connections, and cooling systems to ensure uninterrupted mining operations.

6. Work Environment:

The center provides a comfortable and efficient workspace for the staff working on-site. Ergonomic workstations, break rooms, and recreational areas are designed to promote productivity and well-being.

7. Educational Outreach:

The center is committed to educating the public about the benefits of renewable energy and cryptocurrency mining. It hosts tours, workshops, and educational programs for local schools and the community.

8. Environmental Impact Mitigation:

The facility has implemented strategies to minimize its environmental impact. This includes responsible disposal of electronic waste, wildlife protection measures, and reforestation initiatives in the surrounding area.

9. Monitoring and Reporting:

To maintain transparency, the center regularly reports on its energy usage, carbon emissions, and the amount of Bitcoin mined. This information is shared with the public and relevant regulatory bodies.

10. Innovation and Research:

The data resource center continually invests in research and development to improve the sustainability and efficiency of cryptocurrency mining operations. It also collaborates with academic institutions and industry partners on cutting-edge technology and best practices.

In summary, the Renewable Energy Bitcoin Mining Data Resource Center serves as a shining example of how the cryptocurrency industry can transition toward sustainability. It combines renewable energy sources, energy-efficient infrastructure, and a commitment to environmental responsibility while also contributing to the global blockchain network through Bitcoin mining.



THE BITCOIN FRANCHISE U.S.A

Dear Sir,

I hope this letter finds you in good health and high spirits.

It's imperative that we stay ahead of the curve and capitalize on every opportunity for maximizing returns while mitigating risks.

With this in mind, we are exploring new avenues for diversification within the crypto-space.

Whether you're considering allocating more resources to established cryptocurrencies like Bitcoin and Ethereum, or exploring innovative projects in decentralized finance (DeFi) and non-fungible tokens (NFTs), now is the time to seize the moment and position yourself for long-term success.

In closing, I want to reaffirm our unwavering commitment to our shared vision of building a brighter future through strategic investments in cryptocurrency.

Warm regards,

Sincerely,

Steven Simkovich

Corporate Officer



BITCOIN MINING FRANCHISE

(888) 441-6486 |

info@bitcoinminingfranchise.com

www.bitcoinminingfranchise.com

Address: 32 N Gould Street,
Sheridan, WY 82801



PHASE ONE

These serial numbers represent our franchise model of Asic miners.

NGSBANABCAJJD06EC
NGSBANABCAJJD06D1
NGSBANABCAJJD07NZ
NGSBANABDJA AF01CL
NGSBANABCAJJD08LP
NGSBANABCAJJD05F0
NGSBANABCAJJD08JR
NGSBANABCAJJD05DD
NGSBANABCAJJD08D8
NGSBANABCAJJD05FZ
NGSBANABDJA AF00SC
NGSBANABCAJJD05F4
NGSBANABCAJJD08GA
NGSBANABCAJJD05GC
PIEMADABCJDAB0DP5
PIEMADABCJDAB0DP2
PIEMADABCJDAB0DP1
PIEMADABCJDAB0DNR
PIEMADABCJDAB0HHJ
PIEMADABCJDAB0DNP
PIEMADABCJDAB0DPO
PIEMADABCJDAB0DP7
PIEMADABCJDAB0DP3
YNAHADABCJCBG13J7
PIEMADABCJDAB0DNZ
YNAHADABCJCBJ0DJ2
PIEMADABCJDAB0DNX
YNAHADABCJCBG0YT2
PIEMADABCJDAB0DNV
YNAHADABCJCBG13GH
YNAHADABCJCBG13GM

YNAHADABCJCBG13J3
PIEMADABCJDAB0DNN
YNAHADABCJCBG13J0
YNAHADABCJCBG13FC
YNAHADABCJCBJ0DP9
PIEMADABCJDAB0DPC
YNAHADABCJCBG13GN
YNAHADABCJCBG0YTH
YNAHADABCJCBG13J6
PIEMADABCJCBG05VN
YNAHADABCJCBG0YT5
YNAHADABCJCBG13GJ
YNAHADABCJCBG13GA
PIEMADABCJDAB0DPD
YNAHADABCJCBG13LB
YNAHADABCJCBG13GD
YNAHADABCJCBG13L9
PIEMADABCJDAB0DPB
YNAHADABCJCBG13HY
YNAHADABCJCBG13LA
PIEMADABCJDAB0E3T
PIEMADABCJDAB0E54
PIEMADABCJDAB0E4L
PIEMADABCJDAB0DP9
PIEMADABCJDAB09CG
PIEMADABCJDAB0E58
PIEMADABCJDAB0E3X
PIEMADABCJDAB0E5F
PIEMADABCJDAB0E3W
PIEMADABCJDAB0E5G
PIEMADABCJDAB0E4J

PIEMADABCJDAB0E44
PIEMADABCJDAB09CF
PIEMADABCJDAB0E4Y
PIEMADABCJDAB09C8
PIEMADABCJDAB0E4K
PIEMADABCJDAB0E53
PIEMADABCJDAB0E41
PIEMADABCJDAB0E57
PIEMADABCJDAB0E5D
PIEMADABCJDAB0E42



PHASE TWO

These are the serial numbers for Asic miners operational in our second franchise.

ngsbanabdjaaf0194
ngsbanabdjaaf0043
ngsbanabdjaaf004z
ngsbanabdjaaf00tk
ngsbanabdjaaf0050
ngsbanabdjaaf004y
ngsbanabdjaaf010j
ngsbanabdjaaf017y
ngsbanabdjaaf017x
ngsbanabdjaaf01ak
ngsbanabdjaaf0169
ngsbanabdjaaf00pf
ngsbanabdjaaf01eb
ngsbanabdjaaf016t
ngsbanabdjaaf01aj
ngsbanabdjaaf014r

ngsbanabcajjd076r
ngsbanabcajjd076s
ngsbanabcajjd06zj
ngsbanabcajjd076v
ngsbanabcajjd063l
ngsbanabcajjd0634
ngsbanabcajjd07jb
ngsbanabcajjd07jh
ngsbanabcajjd073j
ngsbanabcajjd073k
ngsbanabcajjd06v8
ngsbanabcajjd07jc
ngsbanabcajjd06v6
ngsbanabcajjd05f9
ngsbanabcajjd06v1
ngsbanabcajjd074c
ngsbanabcajjd072z
ngsbanabcajjd072y

ngsbanabdjaaf01b5
ngsbanabdjaaf00ce
ngsbanabdjaaf012t
ngsbanabdjaaf00d7
ngsbanabdjaaf00c9
ngsbanabdjaaf00me
ngsbanabdjaaf007e
ngsbanabdjaaf00c6
ngsbanabdjaaf00cr
ngsbanabdjaaf00d4
ngsbanabdjaaf00cd
ngsbanabdjaaf01el
ngsbanabdjaaf00mh
ngsbanabdjaaf00db
ngsbanabdjaaf012p
ngsbanabdjaaf017z
ngsbanabdjaaf008f
ngsbanabdjaaf00hr

Work with us!

Next Steps



www.bitcoinminingfranchise.com



info@bitcoinminingfranchise.com



(888) 441 -6486

If you are interested in the Bitcoin Mining Franchise, the next step is to set up an appointment with one of our bitcoin mining consultants. They will be available to answer any questions you may have.

